



ELECTRIC MOTORS

**Cast Iron Series
NEMA Premium**





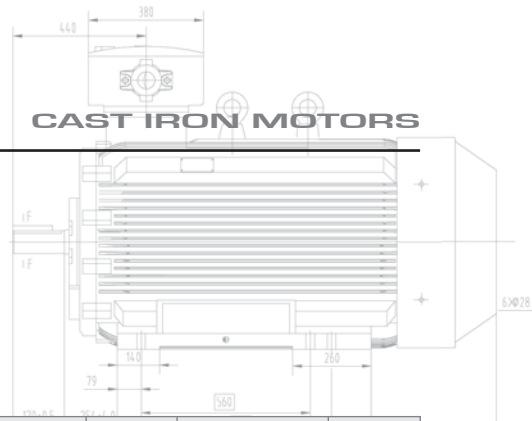
Cast Iron Series **NEMA Premium**

1 - 200HP, Premium Efficient, Three Phase (TEFC)

FEATURES:

- Inverter Duty NEMA MG part 31 - 15:1 CT Nameplated with 50/60 HZ
- 36 Month Warranty
- Removable Feet F1, F2, F0 Convertible up to/including 326T Frame
- 1.25 Service Factor to 365T, 1.15 SF for larger frames
- Conduit Box is 90 degree Rotable
- IP55 Protection with Corrosion Resistant Hardware
- 40 Degree Ambient Rating
- Vacuum Impregnation
- Class H Insulation with "F" Class Connection Leads
- Tropicalization on Stator Winding
- Class 1, Division 2, Groups C and D Compliant
- Nipple Seals Between Conduit Box and Body
- 1045 Steel Shaft to 326T, 4140 326T and up
- Regresable Bearing 254T frame and larger
- Shielded Bearings
- One-Wat Sintered Brass Condensate Drains

HP	Sync Speed	Frame	RPM	Full Load Data						% Rated Torque		Weight Pounds	Bearing		DIM "C" Inches
				FL EFF %	PF Cos0	Amps V.230	Amps V.460	Amps V.575	KVA CODE	Locked Rotor	MAX		DE	ODE	
1	1800	OM 143T	1735	85.5	0.73	3.0	1.5	1.2	K	330%	310%	55.0	6205ZZ	13.0	
	1200	OM 145T	1150	82.5	0.66	3.4	1.7	1.4	K	340%	270%	51.4	6205ZZ	14.0	
1.5	3600	OM 143T	3450	84	0.83	4.0	2.0	1.6	K	330%	310%	51.0	6205ZZ	13.0	
	1800	OM 145T	1715	86.5	0.74	4.4	2.2	1.8	K	350%	350%	59.4	6205ZZ	14.0	
	1200	OM 182T	1150	87.5	0.73	4.4	2.2	1.8	K	310%	250%	106.1	6306ZZ	16.54	
2	3600	OM 145T	3450	85.5	0.87	5.0	2.5	2.0	J	310%	280%	57.6	6205ZZ	14.0	
	1800	OM 145T	1730	86.5	0.75	5.8	2.9	2.3		350%	360%	63.9	6205ZZ	14.0	
	1200	OM 184T	1150	88.5	0.71	6.0	3.0	2.4	J	280%	240%	115.8	6306ZZ	16.54	
3	3600	OM 182T	3510	86.5	0.9	7.2	3.6	2.9		320%	320%	97.7	6306ZZ	16.54	
	1800	OM 182T	1755	89.5	0.8	7.8	3.9	3.1	J	240%	260%	105.8	6306ZZ	16.54	
	1200	OM 213T	1170	89.5	0.74	8.4	4.2	3.4	J	310%	230%	144.2	6308ZZ	18.78	
5	3600	OM 184T	3510	88.5	0.89	11.8	5.9	4.7		300%	250%	107.8	6306ZZ	16.54	
	1800	OM 184T	1745	89.5	0.84	12.4	6.2	5.0		290%	250%	113.3	6306ZZ	16.54	
	1200	OM 215T	1165	89.5	0.74	14.2	7.1	5.7	J	230%	220%	159.6	6308ZZ	20.28	
7.5	3600	OM 213T	3520	89.5	0.88	17.8	8.9	7.1		330%	230%	154.2	6308ZZ	18.78	
	1800	OM 213T	1750	91.7	0.82	18.8	9.4	7.5		340%	230%	169.8	6308ZZ	18.78	
	1200	OM 254T	1170	91	0.73	21.2	10.6	8.5		240%	210%	271.5	6309C3	24.0	
10	3600	OM 215T	3520	90.2	0.9	23.0	11.5	9.2	J	320%	220%	173.1	6308ZZ	20.28	
	1800	OM 215T	1750	91.7	0.82	24.8	12.4	9.9		270%	220%	192.7	6308ZZ	20.28	
	1200	OM 256T	1170	91	0.75	27.4	13.7	11.0	J	270%	200%	284.4	6309C3	25.75	
15	3600	OM 254T	3540	91	0.88	34.8	17.4	13.9		350%	320%	306.9	6309C3	24.0	
	1800	OM 254T	1760	92.4	0.84	36.4	18.2	14.6		250%	200%	309.1	6309C3	24.0	
	1200	OM 284T	1175	91.7	0.8	38.6	19.3	15.4	J	350%	250%	401.1	6311C3	27.44	
20	3600	OM 256T	3530	91	0.89	46.4	23.2	18.6	J	240%	300%	326.3	6309C3	25.75	
	1800	OM 256T	1760	93	0.87	46.2	23.1	18.5		270%	230%	346.1	6309C3	25.75	
	1200	OM 286T	1175	91.7	0.8	51.4	25.7	20.6	J	340%	230%	401.9	6311C3	28.94	



HP	Sync Speed	Frame	Full Load Data						% Rated Torque		Bearing			
			RPM	FL EFF %	PF Cos0	Amps V.230	Amps V.460	Amps V.575	KVA CODE	Locked Rotor	MAX	Weight Pounds	DE	ODE
25	3600	OM 256T	3550	91.7	0.88	57.8	28.9	23.1		310%	230%	388.1	6311C3	26.07
	1800	OM 256T	1770	93.6	0.87	57.2	28.6	22.9		270%	230%	440.7	6311C3	27.44
	1200	OM 286T	1180	93	0.79	63.8	31.9	25.5	J	250%	210%	569.8	6312C3	31.30
30	3600	OM 286TS	3550	91.7	0.88	69.0	34.5	27.6		290%	240%	457.6	6311C3	27.57
	1800	OM 286T	1770	93.6	0.87	68.6	34.3	27.4		270%	230%	442.2	6311C3	28.94
	1200	OM 326T	1180	93	0.79	76.0	38.0	30.4	J	280%	200%	583.0	6312C3	31.30
40	3600	OM 324TS	3560	92.4	0.88	92.2	46.1	36.9	H	300%	260%	569.8	6312C3	29.80
	1800	OM 324T	1770	94.1	0.84	94.2	47.1	37.7	H	240%	220%	631.4	6312C3	31.30
	1200	OM 364T	1180	94.1	0.84	93.6	46.8	37.4	G	220%	200%	761.2	6313C3	33.47
50	3600	OM 326TS	3560	93	0.88	113.8	56.9	45.5	H	240%	270%	589.4	6312C3	29.80
	1800	OM 326T	1770	94.5	0.86	114.4	57.2	45.8	H	220%	270%	653.4	6312C3	31.30
	1200	OM 365T	1180	94.1	0.86	115.2	57.6	46.1	J	240%	270%	825.0	6313C3	34.45
60	3600	OM 364TS	3560	93.6	0.89	135.0	67.5	54.0	J	260%	310%	820.6	6313C3	31.34
	1800	OM 364T	1775	95	0.85	138.8	69.4	55.5	H	260%	200%	884.4	6313C3	33.47
	1200	OM 4042T	1185	94.5	0.85	140.0	70.0	56.0	H	210%	200%	1025.2	NU6313 6313C3	38.19
75	3600	OM 365TS	3560	93.6	0.90	166.6	83.3	66.8	G	300%	260%	910.8	6313C3	32.32
	1800	OM 365T	1775	95.4	0.85	172.4	86.2	69.0	G	250%	200%	957.0	6313C3	34.45
	1200	OM 405T	1185	94.5	0.85	175.4	87.7	70.1	H	220%	210%	1111.0	NU6313 6313C3	38.19
100	3600	OM 405TS	3570	94.1	0.90	220.0	110.0	88.0	J	220%	200%	1053.8	6314C3	35.19
	1800	OM 405T	1780	95.4	0.86	228.0	114.0	91.2	H	240%	200%	1091.2	6316C6 6314C3	38.19
	1200	OM 444T	1180	95	0.86	230.0	115.0	92.0	H	220%	200%	1709.4	NU6319 6319C3	43.90
125	3600	OM 444TS	3575	95	0.90	274.0	137.0	109.6	H	220%	210%	1367.0	6316C3	40.15
	1800	OM 444T	1780	95.4	0.88	280.0	140.0	112.0	H	220%	210%	1856.8	6319C3	43.90
	1200	OM 445T	1180	95	0.85	290.0	145.0	116.0	H	210%	200%	1815.0	NU6319 6319C3	43.90
150	3600	OM 445TS	3575	95	0.91	324.0	162.0	129.8	H	220%	210%	1526.1	6316C3	40.15
	1800	OM 445T	1780	95.8	0.88	334.0	167.0	133.6	H	220%	210%	1944.8	6319C3	43.90
	1200	OM 447T	1180	95.8	0.87	340.0	170.0	136.0	H	210%	210%	2127.4	NU6319 6319C3	52.40
200	3600	OM 447TS	3575	95.4	0.92	430.0	215.0	172.0	H	220%	210%	2107.0	6316C3	48.65
	1800	OM 447T	1780	96.2	0.88	442.0	221.0	176.8	H	220%	210%	2226.0	6319C3	52.40



Cast Iron Series



1 - 200HP, Premium Efficient, Three Phase (TEFC)

Overall & Installation Dimensions

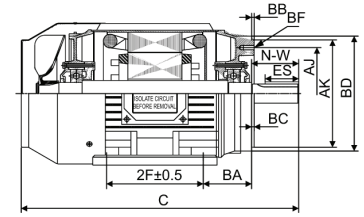
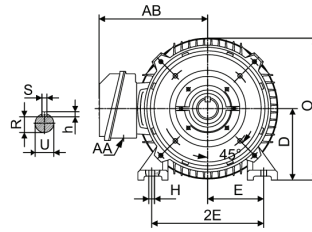
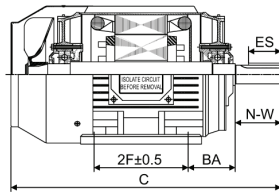
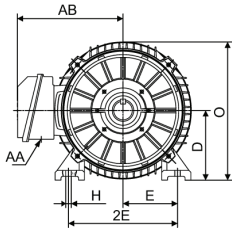
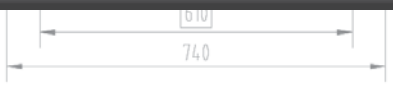


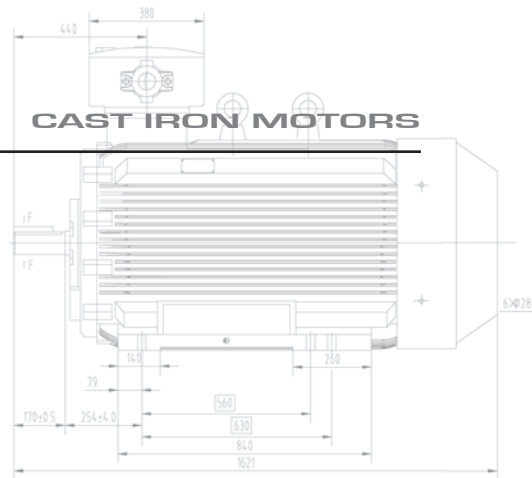
Figure 1 - Foot Mount

Figure 2 - Foot Mount, C-Faced

Dimensions are in inches

Frame	Foot Mounting				Shaft						General				C-Face						
	2E	2F	H	BA	N-W	U	S	h	R	ES	C	D	O	AA	AB	AJ	AK	BB	BC	BD	BD
OM 143T		4.0		2.25	2.25	0.875	0.188	0.188	0.771	1.41	13.0	3.5	7.02	3/4	5.90	-	-	-	-	-	-
OM 145T	5.5	5.0	0.34								14.0										
OM 143TC		4.0		2.75							13.0					5.875	4.5	0.16	0.12	6.5	4*3/8-16
OM 145T		5.0									14.0										
OM 182T		4.5		2.75	2.75	1.125	0.25	0.25	0.986	1.78	16.54	4.5	8.9	3/4	7.03	-	-	-	-	-	-
OM 184T	7.5	5.5	0.41								16.54										
OM 182TC		4.5		3.5							16.54					7.25	8.5	0.25	0.12	9.0	4*1/2-13
OM 184TC		5.5									16.54										
OM 213T		5.5		3.5	3.38	1.375	0.312	0.312	1.201	2.41	18.78	5.25	10.45	1	7.8	-	-	-	-	-	-
OM 215T	8.5	7.0	0.41								20.28										
OM 213TC		5.5		4.25							18.78					7.25	8.5	0.25	0.25	9.0	4*1/2-13
OM 215TC		7.0									20.28										
OM 254T		8.25		4.25	4.0	1.625	0.375	0.375	1.416	2.91	24.0	6.25	12.44	1-1/4	9.96	-	-	-	-	-	-
OM 256T	10	10	0.53								25.75										
OM 254TC		8.25		4.75							24.0					7.25	8.5	0.25	0.25	10.0	4*1/2-13
OM 256TC		10									25.75										
OM 284T		9.5		4.75	4.62	1.875	0.500	0.500	1.591	3.28	27.44	7.0	13.94	1-1/2	10.63	9.0	10.5	0.25	0.25	11.25	4*1/2-13
OM 286T	11	11	0.53								28.94										
OM 284TS		9.5			3.25	1.625	0.375	0.375	1.416	1.91	26.07										
OM 286TS		11									27.57										
OM 324T		10.5		5.25	5.25	2.125	0.500	0.500	1.845	3.91	31.3	8.0	15.94	1	12.88	11.0	12.5	0.25	0.25	14.00	4*5/8-11
OM 326T	12.5	12	0.66								31.3										
OM 324TS		10.5			3.75	1.875	0.500	0.500	1.591	2.03	29.8										
OM 326TS		12									29.8										





Dimensions are in inches

Frame	Foot Mounting				Shaft						General					C-Face							
	2E	2F	H	BA	N-W	U	S	h	R	ES	C	D	O	AA	AB	AJ	AK	BB	BC	BD	BD		
OM 364T	14	11.25	0.66	5.88	5.88	2.375	0.625	0.625	2.021	4.28	33.47	9.0	17.95	3	14.0	11.0	12.5	0.25	0.25	14.0	8*5/8-11		
OM 365T		12.25			3.75	1.875	0.500	0.500	1.991	2.03	34.45											31.34	
OM 364TS		11.25																					32.32
OM 365TS		12.25																					
OM 404T	16	12.25	0.81	6.62	7.25	2.875	0.750	0.750	2.450	5.65	38.19	10.0	19.85	3	15.13	11.0	12.5	0.25	0.25	15.5	8*5/8-11		
OM 405T		13.75			4.25	2.125	0.500	0.500	1.845	2.78	35.19												
OM 404TS		12.25																					
OM 405TS		13.75																					
OM 444T	18	14.5	0.81	7.5	8.5	3.375	0.875	0.875	2.880	6.91	43.9	11.0	22.05	3	17.97	14.0	16.0	0.25	0.25	18.0	8*5/8-11		
OM 445T		16.5			4.75	2.375	0.625	0.625	2.021	3.03	40.15												
OM 444TS		14.5																					
OM 445TS		16.5																					
OM 447T	18	20	0.83	7.5	8.5	3.375	0.875	0.875	2.880	6.91	52.4	11.0	22.05	3	17.97	14.0	16.0	0.25	0.25	18.0	8*5/8-11		
OM 449T		25			4.75	2.375	0.625	0.625	2.021	3.03	48.65												
OM 447TS		20																					
OM 449TS		25																					

